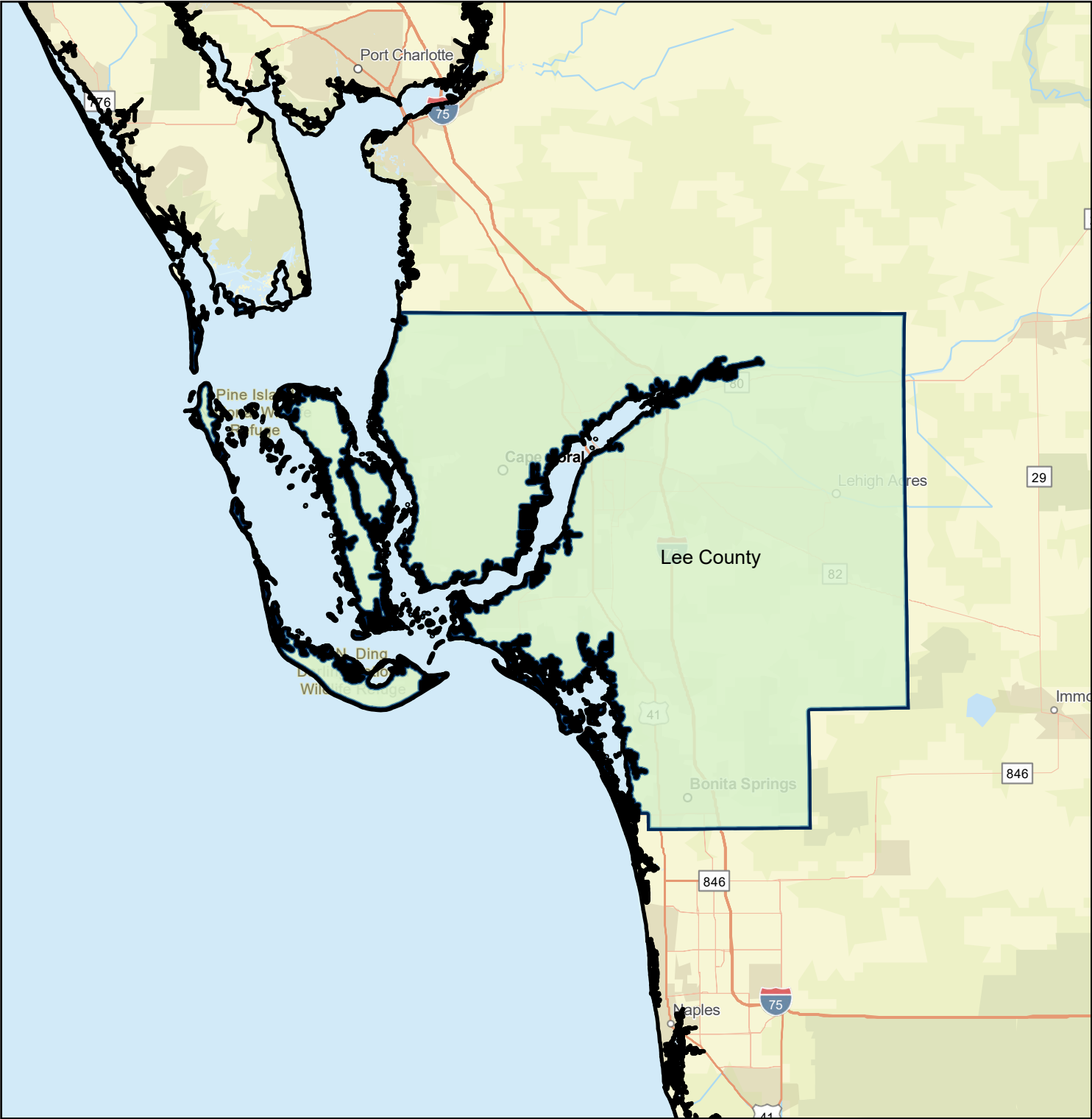


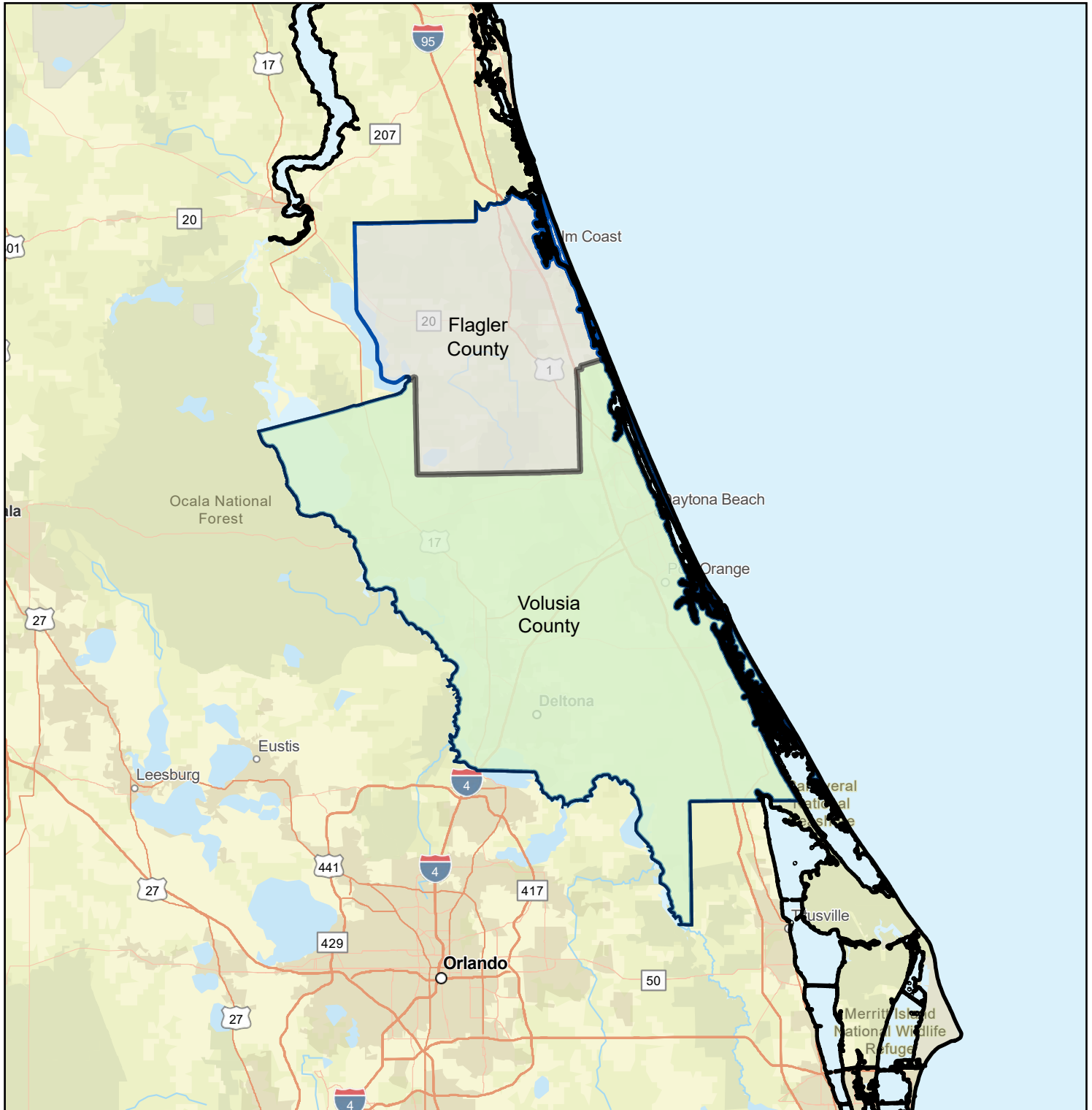
CRA Assessment Area



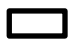

Cape Coral, FL



- Fifth Third Bank Assessment Area / County Boundary
- MSA Boundary
- State Boundary
- Outside Assessment Area, within MSA

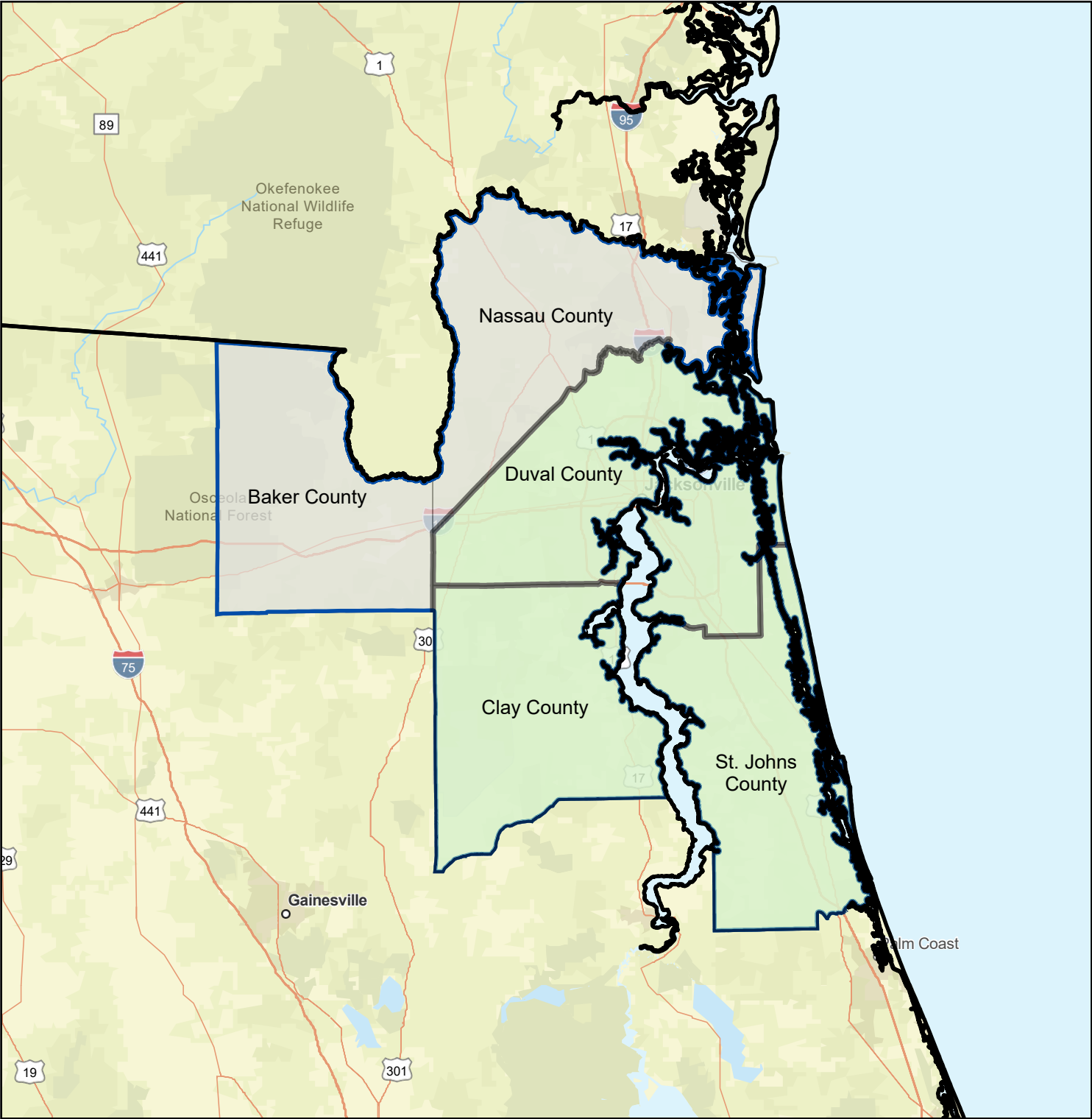
CRA Assessment Area Deltona, FL



-  Fifth Third Bank Assessment Area / County Boundary
-  MSA Boundary
-  State Boundary
-  Outside Assessment Area, within MSA

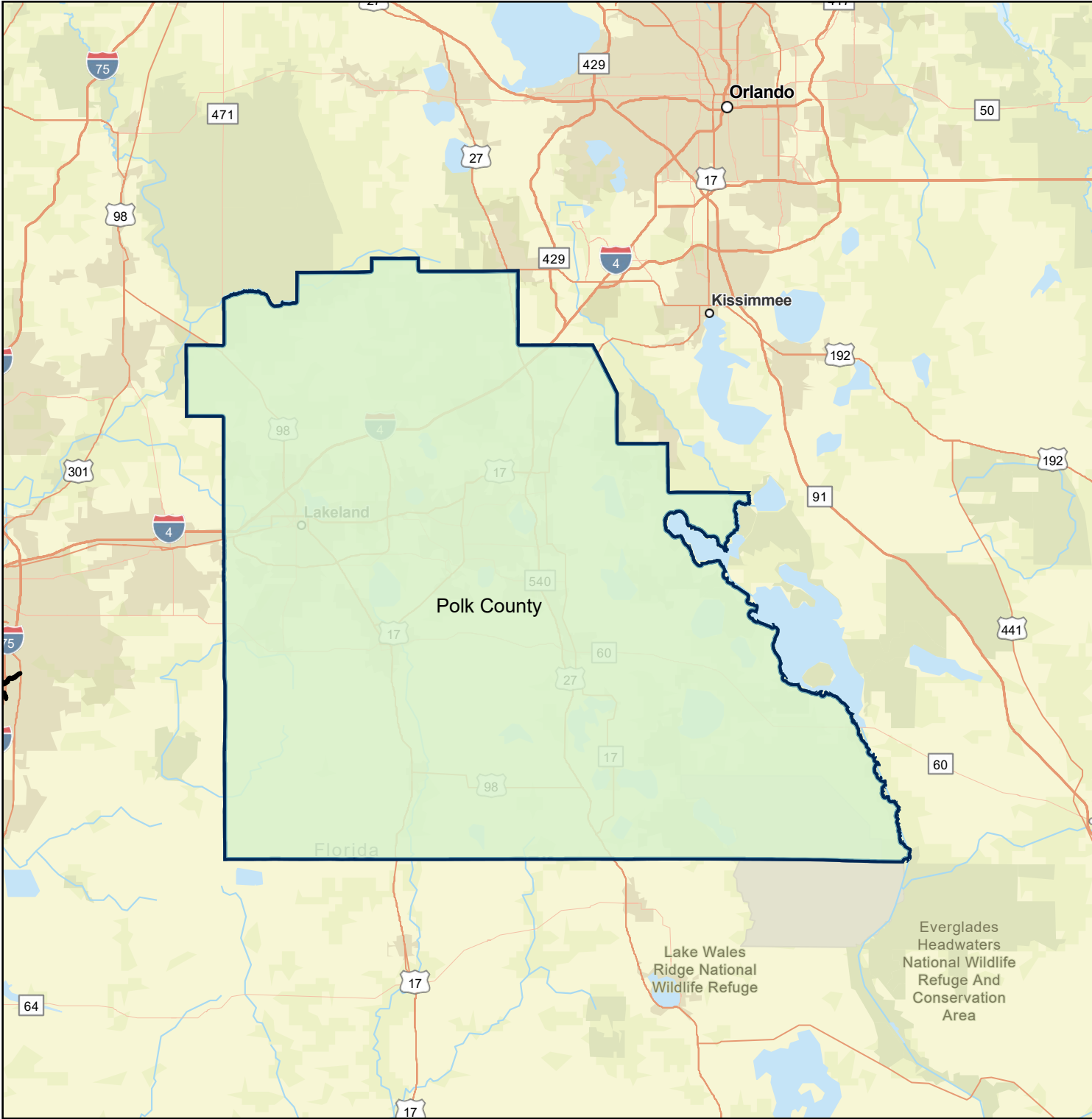
CRA Assessment Area

Jacksonville, FL



- Fifth Third Bank Assessment Area / County Boundary
- MSA Boundary
- State Boundary
- Outside Assessment Area, within MSA

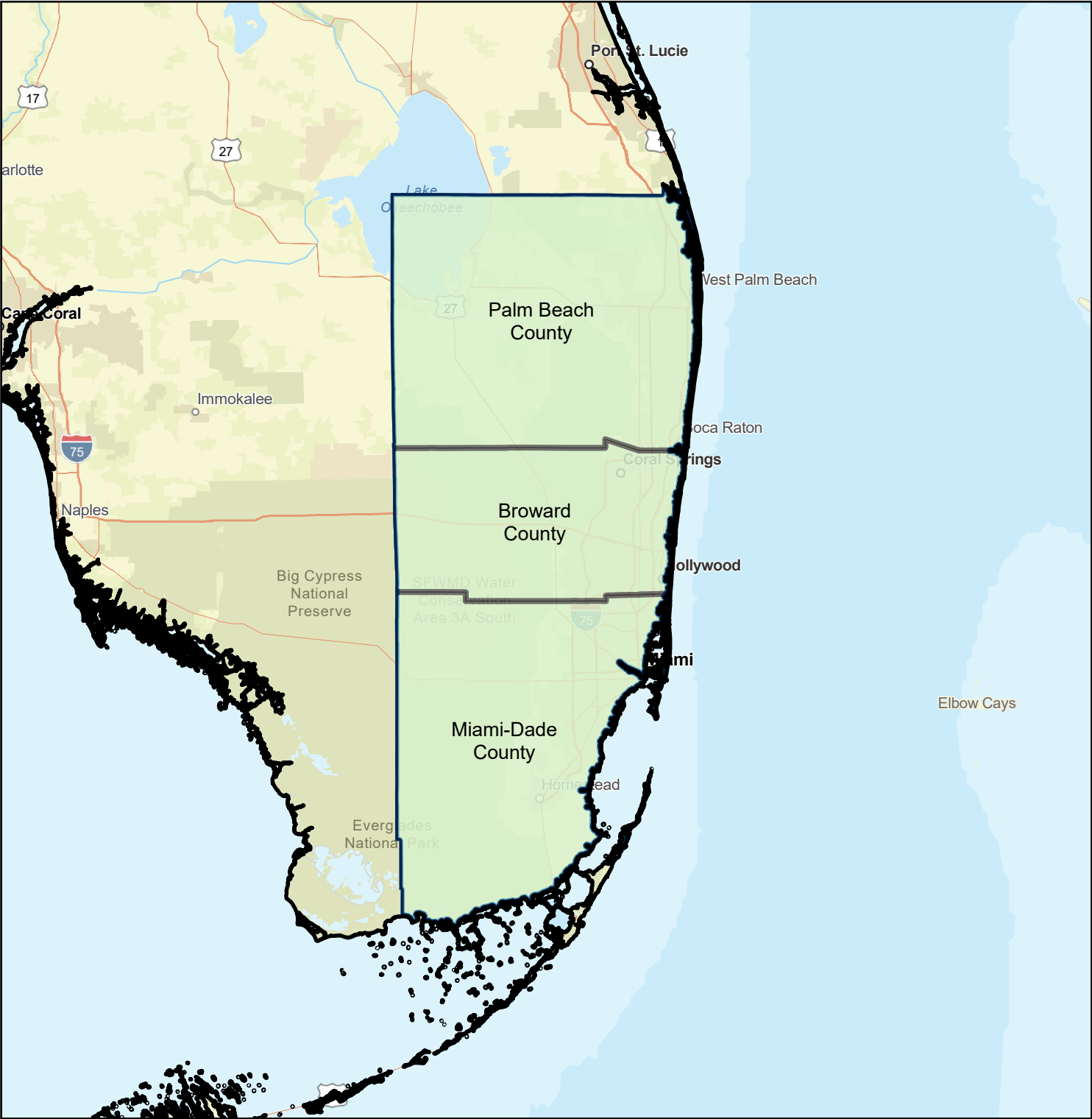
CRA Assessment Area Lakeland, FL



- Fifth Third Bank Assessment Area / County Boundary
- MSA Boundary
- State Boundary
- Outside Assessment Area, within MSA

CRA Assessment Area

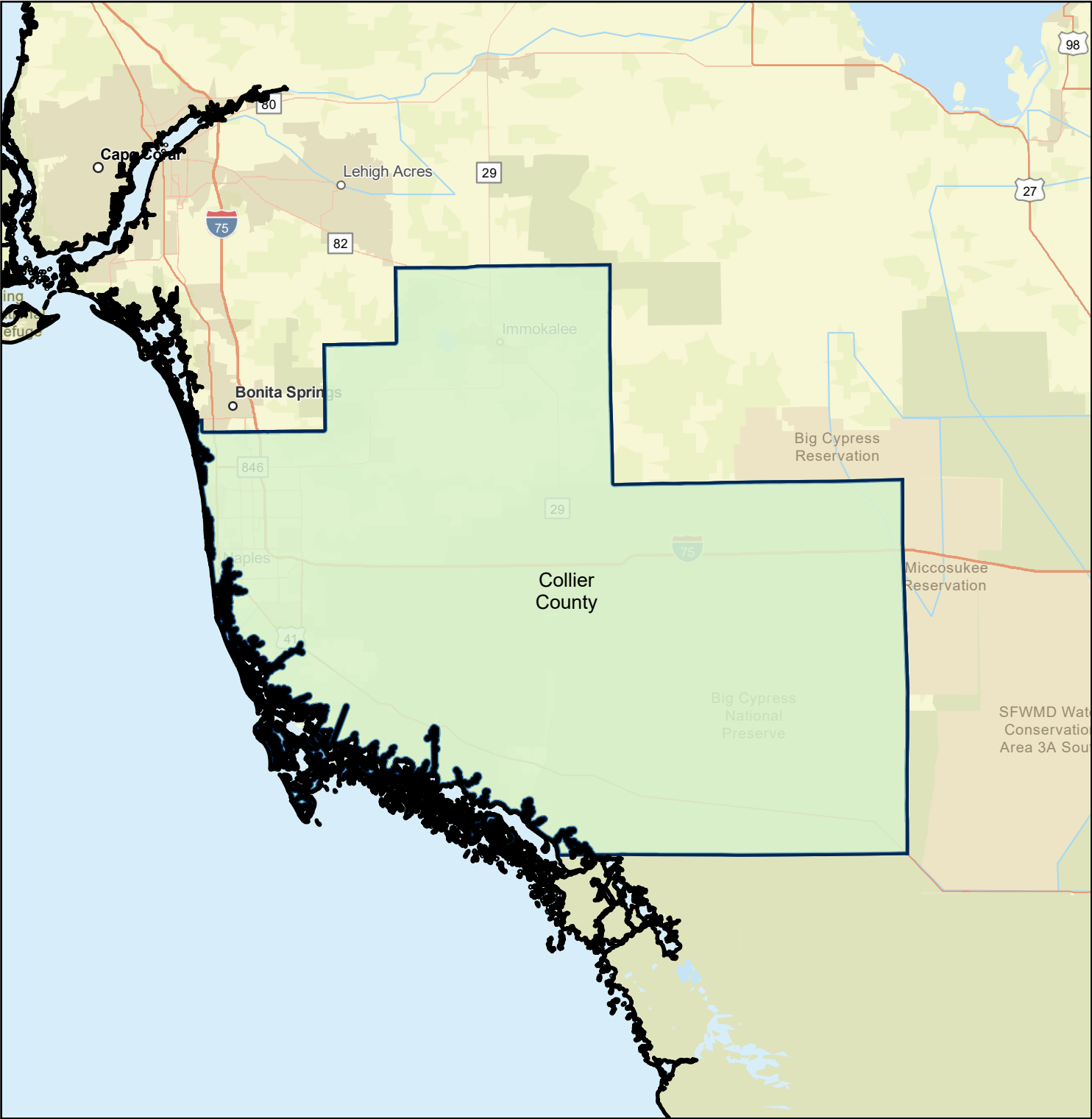
Miami, FL



- Fifth Third Bank Assessment Area / County Boundary
- MSA Boundary
- State Boundary
- Outside Assessment Area, within MSA

CRA Assessment Area

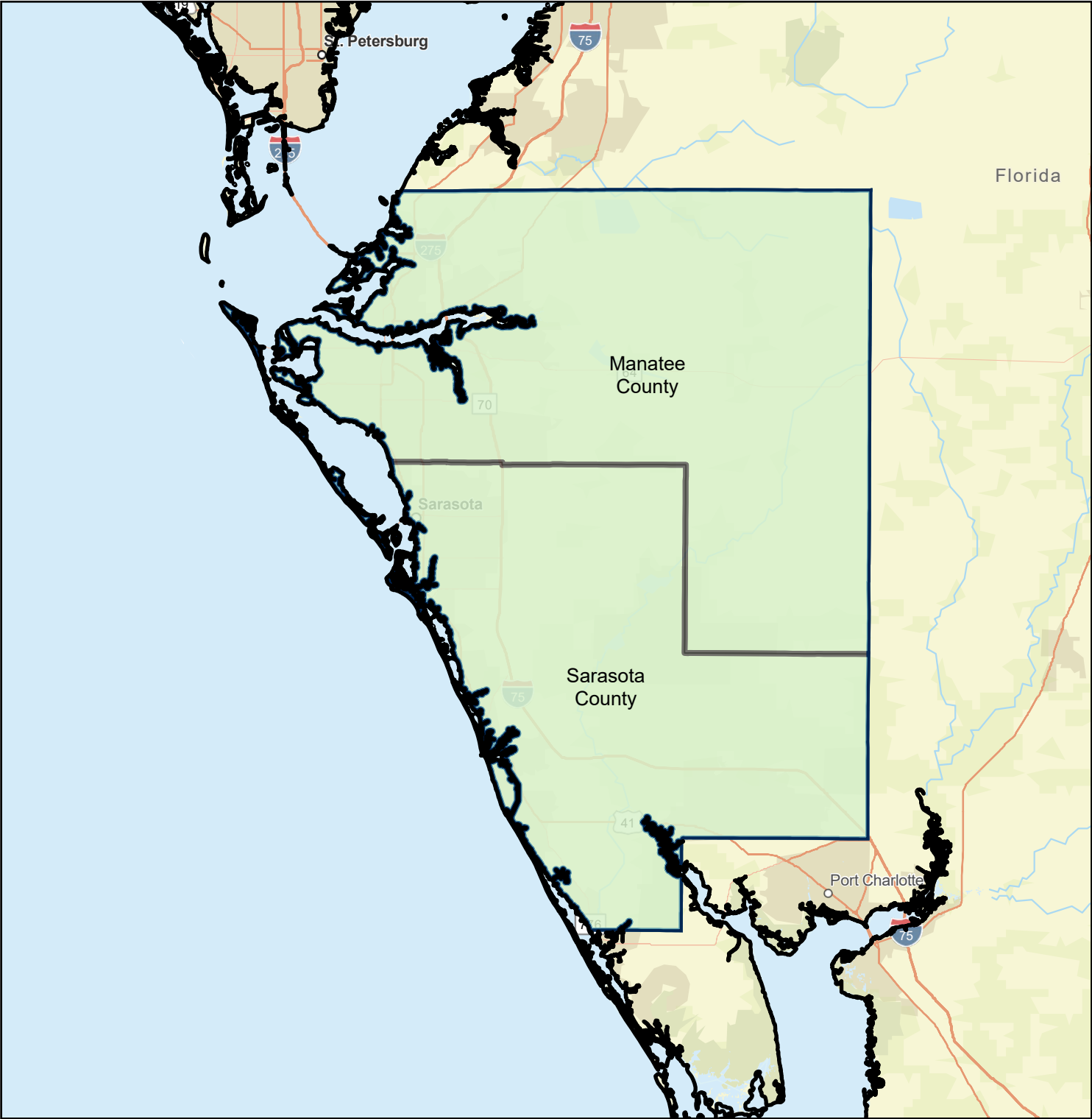
Naples, FL



- Fifth Third Bank Assessment Area / County Boundary
- MSA Boundary
- State Boundary
- Outside Assessment Area, within MSA

CRA Assessment Area

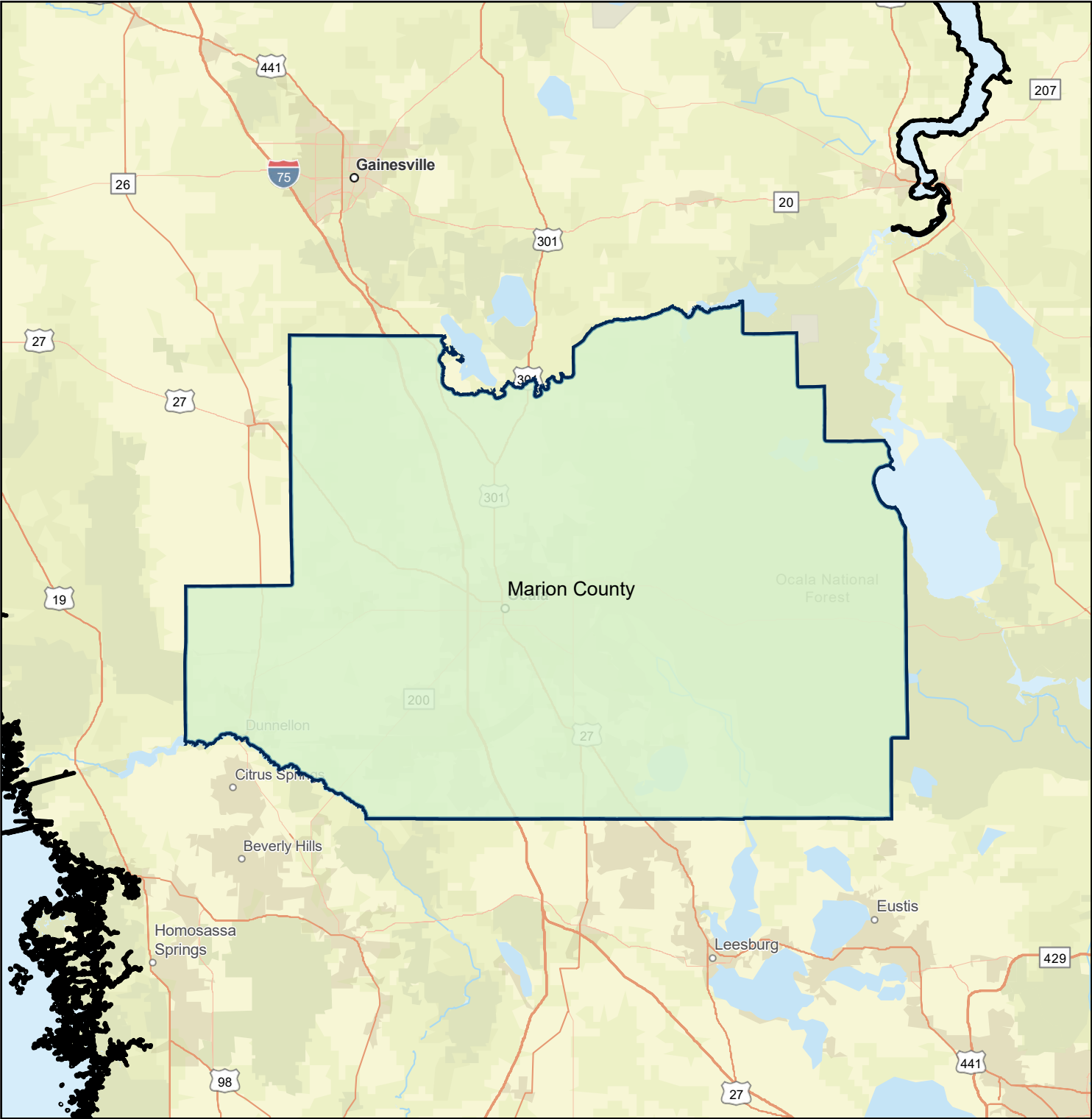
North Port, FL



- Fifth Third Bank Assessment Area / County Boundary
- MSA Boundary
- State Boundary
- Outside Assessment Area, within MSA

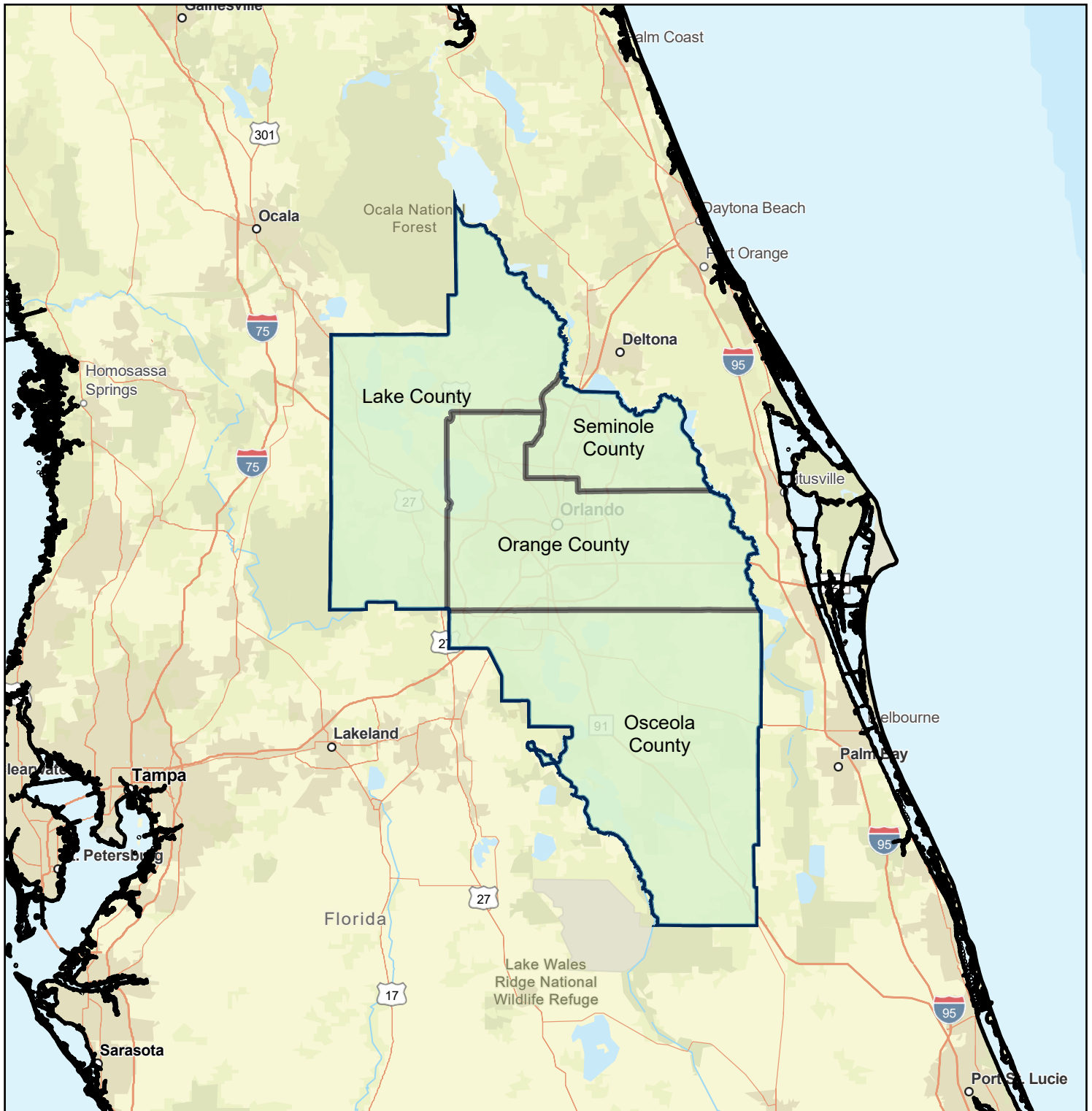
CRA Assessment Area



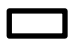

Ocala, FL



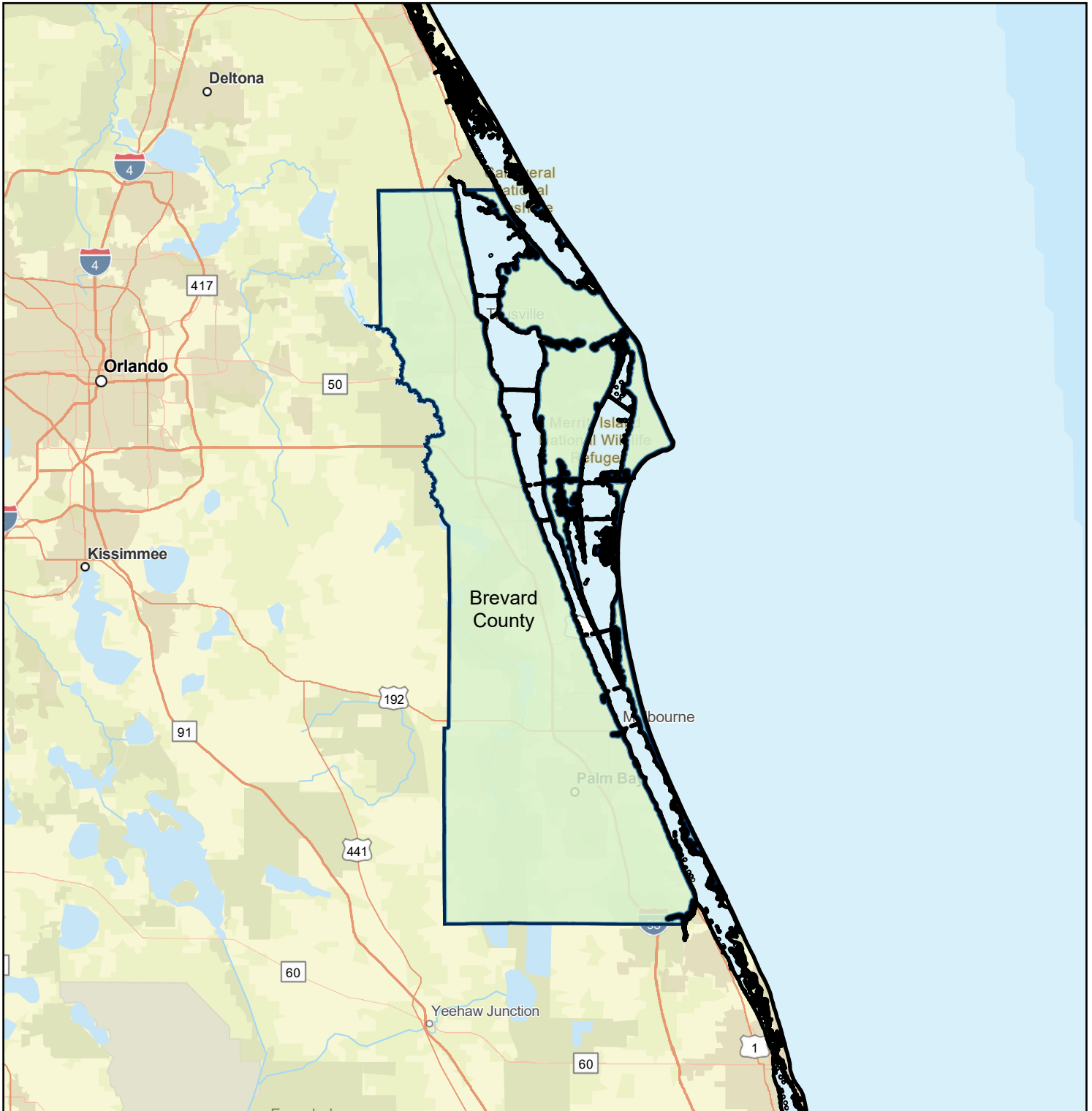
- Fifth Third Bank Assessment Area / County Boundary
- MSA Boundary
- State Boundary
- Outside Assessment Area, within MSA



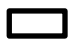

CRA Assessment Area Orlando, FL



-  Fifth Third Bank Assessment Area / County Boundary
-  MSA Boundary
-  State Boundary
-  Outside Assessment Area, within MSA

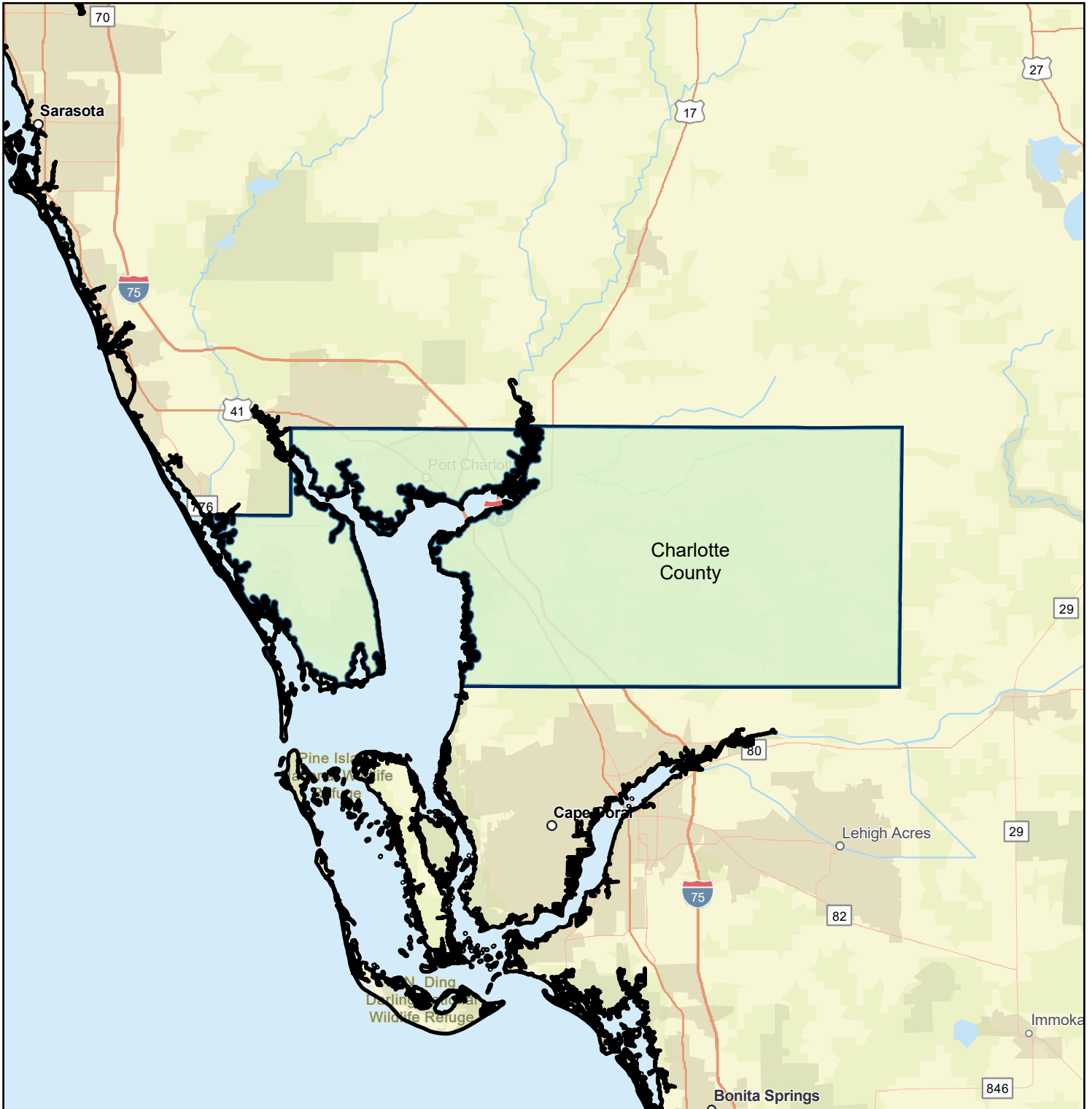
CRA Assessment Area Palm Bay, FL



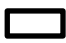



-  Fifth Third Bank Assessment Area / County Boundary
-  MSA Boundary
-  State Boundary
-  Outside Assessment Area, within MSA

CRA Assessment Area

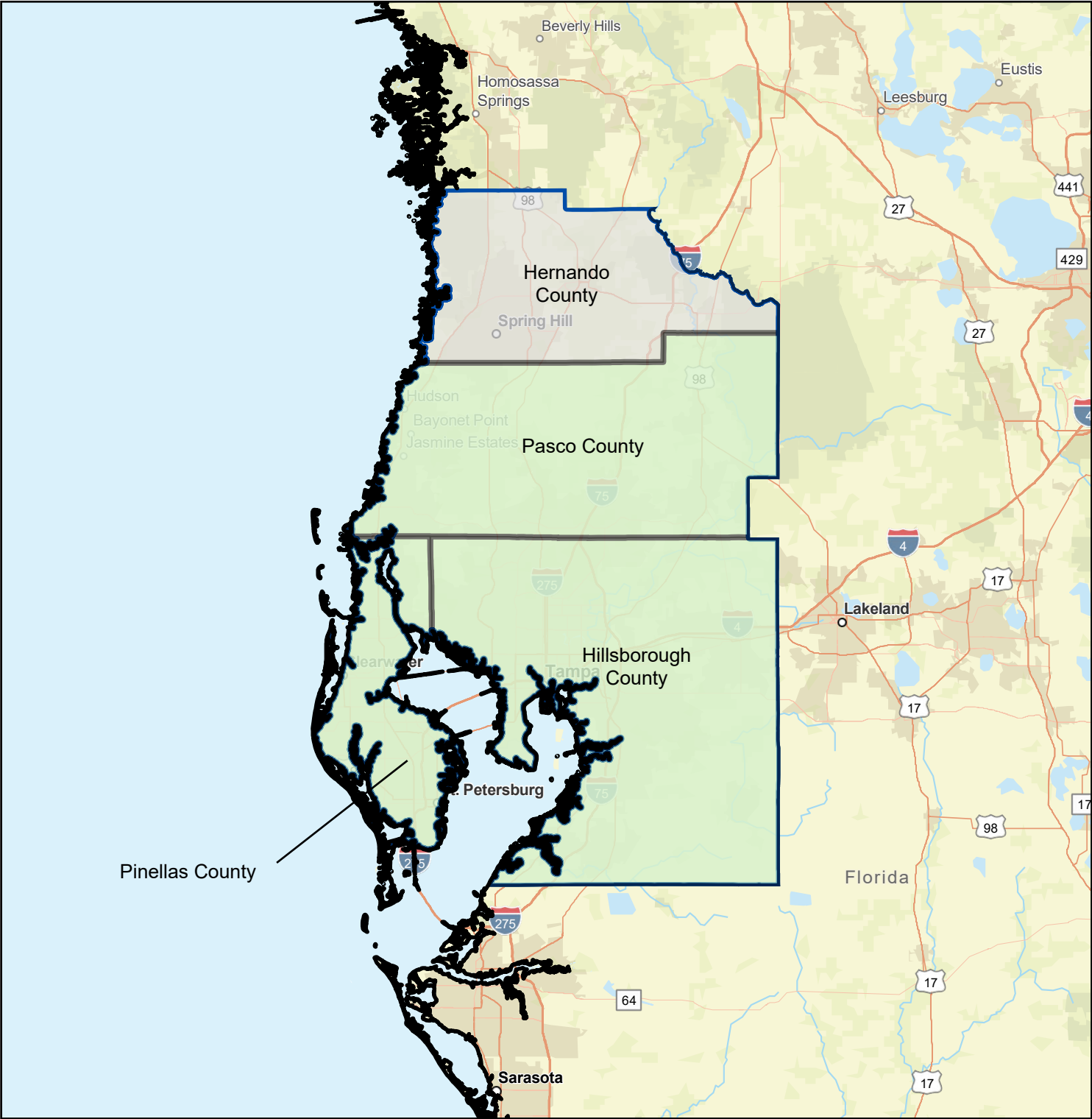
Punta Gorda, FL



-  Fifth Third Bank Assessment Area / County Boundary
-  MSA Boundary
-  State Boundary
-  Outside Assessment Area, within MSA

CRA Assessment Area

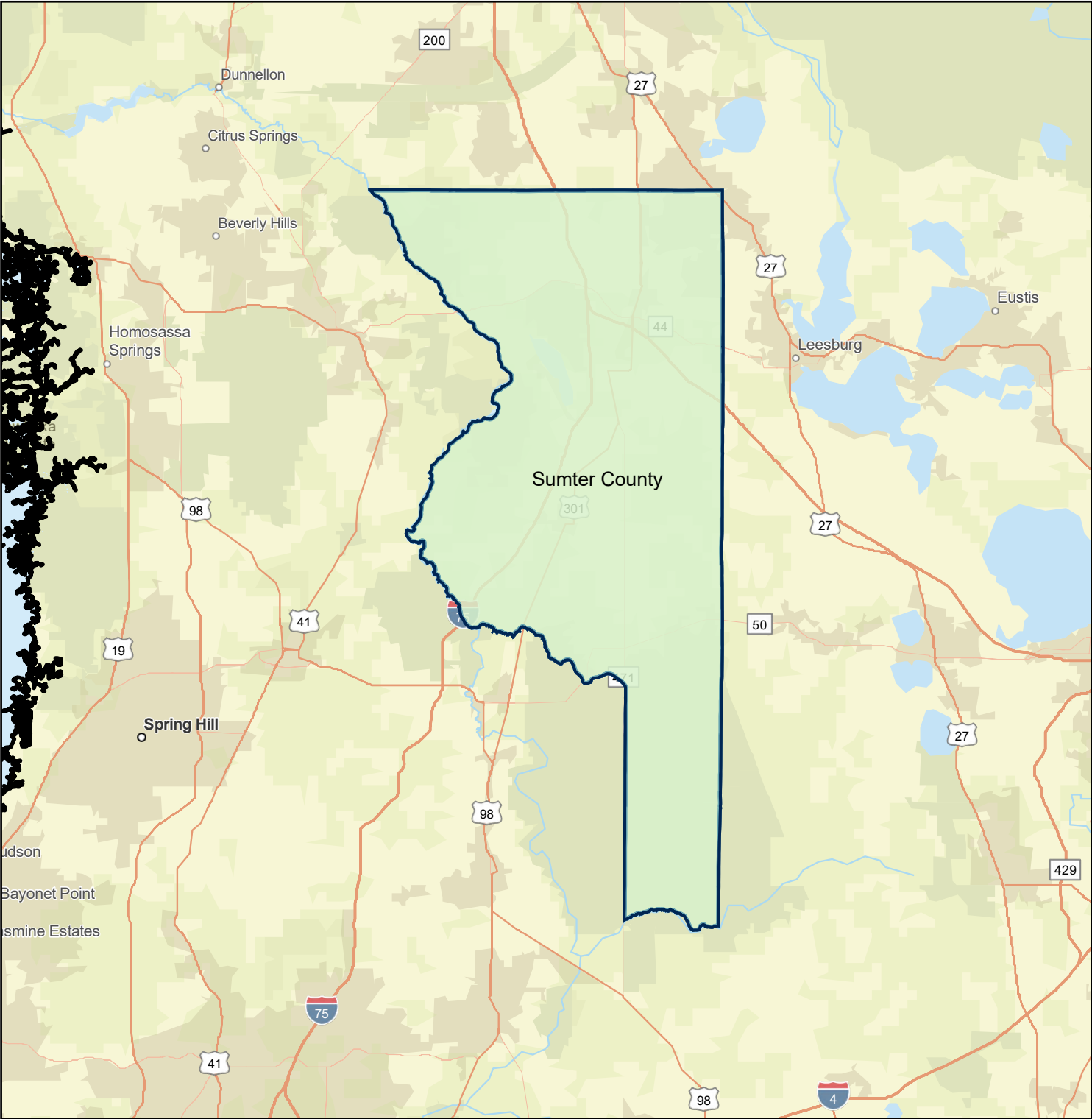
Tampa, FL







- Fifth Third Bank Assessment Area / County Boundary
- MSA Boundary
- State Boundary
- Outside Assessment Area, within MSA

CRA Assessment Area

Wildwood, FL



-  Fifth Third Bank Assessment Area / County Boundary
-  MSA Boundary
-  State Boundary
-  Outside Assessment Area, within MSA